

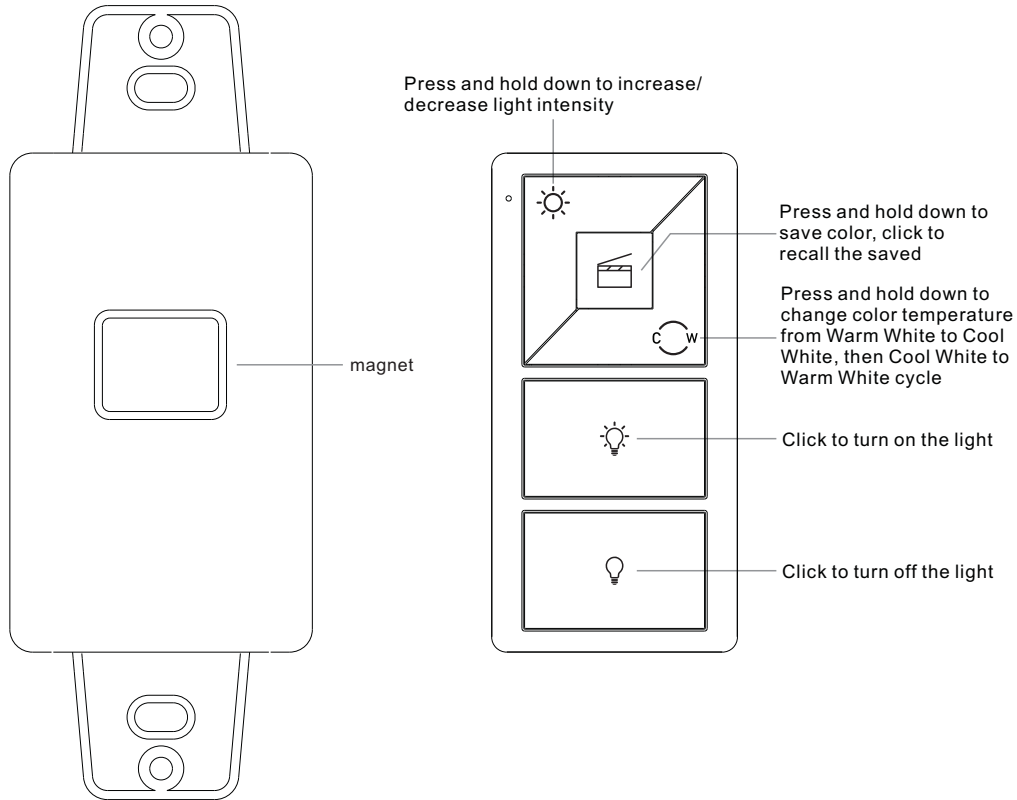
# RF Wireless Dual Color remote

70010022



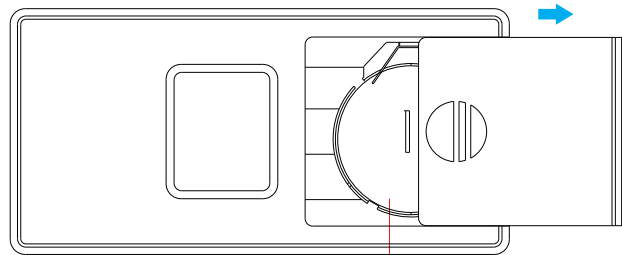
**Important:** Read All Instructions Prior to Installation

## Function introduction



Bracket

Front side



Back side

**Note:** Before the first use, please remove the protective film on the battery.

## Product Data

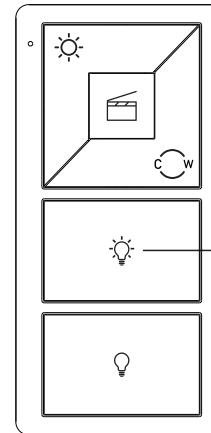
Output	RF signal
Operation Frequency	916.5MHz
Power Supply	3V(CR2032 battery)
Operating temperature	0-40°C
Relative humidity	8% to 80%
Dimensions	66x32.5x8.9mm

- Control 1 zone of receiver
- CCT color controller
- Compatible with all universal series RF receivers
- 1 receiver can be paired by max 8 different remote controls.
- Waterproof grade: IP20

## Safety & Warnings

- This device contains a button lithium battery that shall be stored and disposed properly.
- DO NOT expose the device to moisture.


## Pair with RF receiver



**Step 1:** Do wiring the RF receiver according to wiring diagram (please refer to the instruction of RF receiver that you would like to pair with).



**Step 2:** Click the "Learning Key" button on RF receiver or re-power on the receiver three times continuously to set it into pairing status

**Step 3:** Click any button on the remote (e.g. button ) , LED lights connected with the RF receiver flicker once means the receiver is paired with the remote successfully.

**Note:** one receiver can be paired with max 8 remote controls.

## Installation

